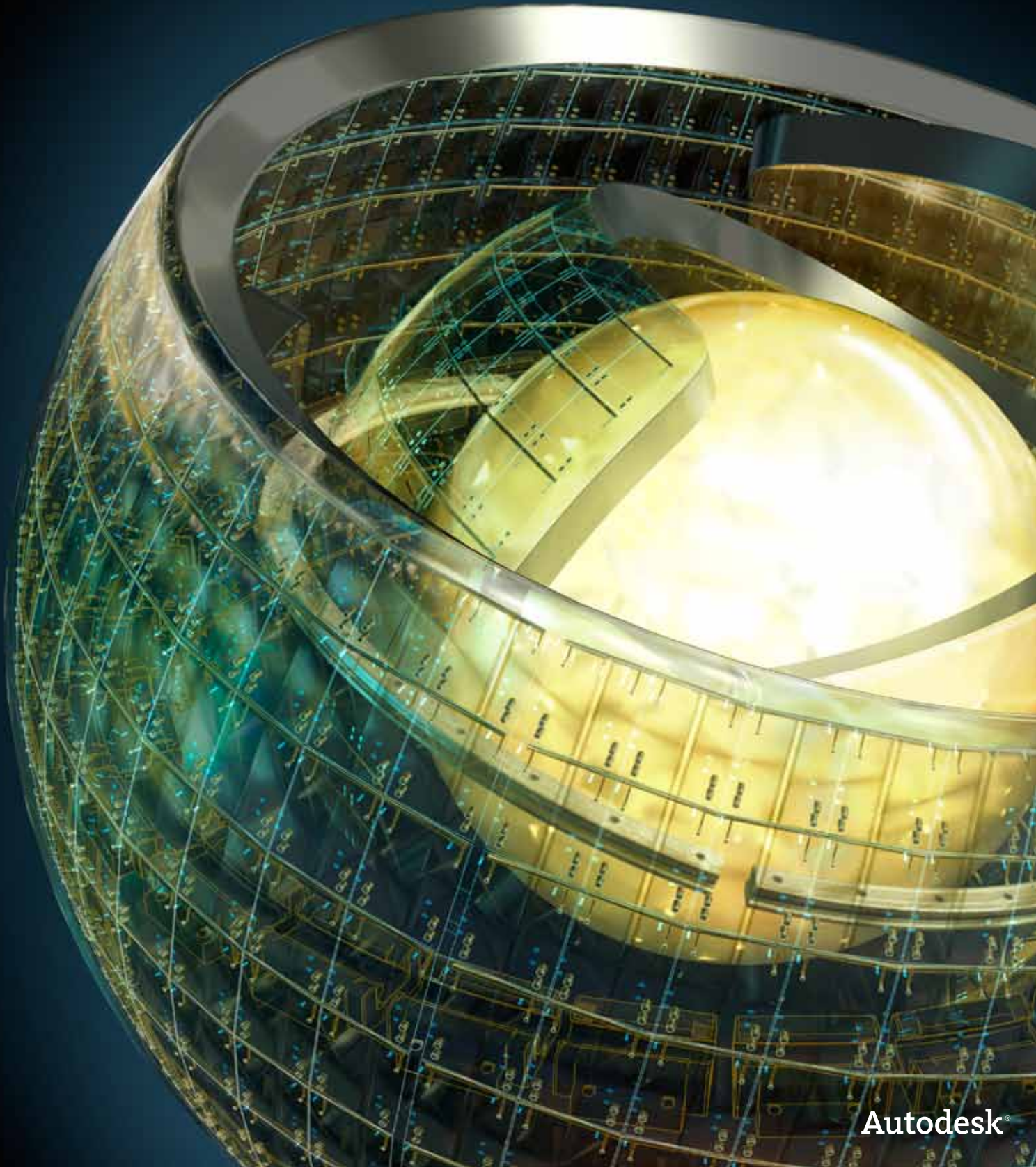


# Autodesk® Subscription

Maximize the power of your design tools.



Autodesk®

# What Does Autodesk® Subscription Offer?

With Autodesk Subscription you always have access to the most current and powerful set of software and services available. Subscription awards you with the latest product releases and enhancements, web support, and flexible licensing to get ahead.

## Stay Competitive with Autodesk Subscription

When you decide to join Autodesk Subscription, you're maximizing the power of your design tools. Your products can always be up to date with the latest releases and enhancements, while your workflow will benefit from increased capabilities—from flexible licensing to more capabilities with Autodesk 360.



### Gain a Greater Advantage with Autodesk® 360

Subscription awards you more capacity and capability with Autodesk 360 to provide you with anytime, anywhere access, better collaboration, and accelerated design innovation—dramatically improving the way you work. Subscription provides you access to cloud services where you can improve the way you visualize and optimize your designs through the virtually infinite computing capacity of cloud.



### Streamline Your Collaboration Efforts

Through your Autodesk 360 account you can invite others to view, edit, and comment on designs straight from a web browser or mobile device, without the need for original design software. Your entire collaboration process remains documented in the cloud, offering a seamless and well-organized workflow that helps your team achieve better design.



### More Cloud Storage to Work with

With Subscription, the storage space available in your Autodesk 360 account increases to 25GB per seat. Saving files to the cloud allows you to access your designs anywhere, anytime through the web or mobile applications. Today you can work wherever you're most efficient through a centralized 360 workspace.



### Your Safe and Secure Cloud Workspace

The Autodesk 360 cloud platform is built on a secure, reliable, and protected infrastructure specifically constructed for web services. Work and collaborate with confidence, knowing your data and authentication are safe and backed up.







## Access to Autodesk 360 Cloud Services and Products

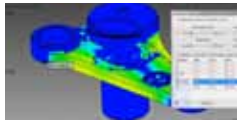
### Extend your workflows from the desktop to the cloud.

With an Autodesk Subscription to a commercial product or suite you gain access to a collection of cloud services and cloud-enabled products powered by Autodesk 360. The virtually infinite computing capacity of the cloud allows you to run tasks without tying up your desktop or the need for expensive hardware. Now you can test the performance of multiple design options and rapidly increase the number of visualizations as an integrated part of your workflow.

You can access Autodesk 360 services through a web or mobile interface as well as through your desktop software. Cloud services include:



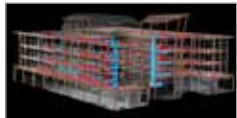
- **Impressive Rendering:** Autodesk® 360 Rendering reduces the time and cost it takes to create compelling, photorealistic visualizations and panoramas —without tying up the desktop or requiring specialized rendering hardware.



- **Streamlined Optimization:** Extend ideation and simulation beyond the desktop by testing the performance of multiple product design options with Autodesk® 360 Optimization for Autodesk® Inventor®.



- **Detailed Energy Analysis:** Gain insight into energy consumption and building lifecycle costs in the early stages of design with Autodesk® 360 Energy Analysis for Autodesk® Revit®.



- **Powerful Structural Analysis:** Explore more design options and predict performance prior to construction with Autodesk® 360 Structural Analysis for Autodesk® Revit®.



- **Optimized Efficiency:** With Autodesk® Green Building Studio® perform whole building analysis, optimize energy efficiency, and work toward carbon neutrality early in the design process with web-based energy analysis software.



- **Effective Urban Planning:** Make better-informed decisions and drive quicker stakeholder buy-in by publishing, sharing and managing large infrastructure models on the cloud with Autodesk® 360 Infrastructure Modeler.

More Autodesk 360 cloud services and products are available to Subscription customers. Discover the full list at [www.autodesk.com/subscription-cloud](http://www.autodesk.com/subscription-cloud).

## Achieve More with Cloud

### Drive better design results.

Autodesk 360 cloud services require Cloud Units—or cloud computing capacity—to run product-specific tasks in the cloud. Depending on the product or suite you have on Subscription, you receive greater cloud capacity to perform more tasks on Autodesk 360, helping to speed your design process.

Subscribers receive initial Cloud Units for every year of Subscription purchased. Your Cloud Unit entitlement dramatically increases when you subscribe to a Premium or Ultimate Suite, providing you the most compelling advantage with the cloud.

Subscription for:	Cloud Units
Standalone products or Standard Suite	100
Premium Suite	250
Ultimate Suite	500

Usage of Cloud Units for the compute-intensive Autodesk 360 services are as follows:

Autodesk® 360 Rendering	5 Cloud Units per image rendered
Autodesk® 360 Optimization for Autodesk® Inventor®	5 Cloud Units per optimization run
Autodesk® 360 Structural Analysis for Autodesk® Revit®	3 Cloud Units per analysis

“Cloud computing opens up doors for better decisions to be made.”

—John Evans  
Owner and Digital Prototyping Specialist  
John Evans Designs



## The Autodesk family of design suites provides comprehensive and powerful workflows for:

- Building Design
- Engineering
- Construction
- Infrastructure
- Product Design
- Plant Design
- Factory Design

When coupled with Autodesk Subscription, you're able to connect your workflow on the desktop to mobile devices and the cloud with Autodesk 360. These workflows enable you to explore more design possibilities, achieve better results faster, and collaborate more effectively.

[www.autodesk.com/suites](http://www.autodesk.com/suites)

“Subscription keeps our team and our product designs ahead of the curve.”

—Mark Yorns  
Director of Engineering  
Guardair Corporation

## Product Upgrades and Enhancements

### Stay ahead of the competition.

With Autodesk Subscription you always have the latest and most powerful tools on hand. You can gain immediate access to software releases and product enhancements that can give you the ability to maintain a competitive edge all year long. Staying current on your Subscription lowers your upgrade costs, helping you maintain a predictable software budget. It's the best and most economical way to stay ahead of your competition.

## Flexible Licensing Rights

### The freedom to work the way you want.

When collaborating across internal and external teams, you need the right software on hand at the right time and place. With the following flexible licensing rights\*, Subscription gives you more freedom with your software:

**Previous Version Rights:** Customers sometimes require you to deliver projects with a specific software version. With previous version rights, you're able to use previous and current versions of desktop software simultaneously.

**Home Use Rights:** Work doesn't always happen in the office—with home use rights you're able use your software at the office or at home.

**Extra Territory Rights:** Occasionally work travel takes you far away from home—extra territory rights allows you to use your licensed software outside the country of purchase for up to 90 days.

## Technical Support Options

### Get the assistance you need.

Autodesk Subscription allows you to choose a level of technical support that best meets your needs and budget. Each option helps you with installation and configuration as well as troubleshooting issues with your software and cloud services.

**Basic Support:** Included in Autodesk Subscription, Autodesk® Basic Support provides access to a package of Autodesk online support services. Basic Support provides access to:

- Community support forums
- One-on-one Autodesk web support
- Autodesk online support, including a knowledge base with help documents, tutorials, and training videos, and the opportunity to search an extensive collection of Autodesk technical solutions and community support forum threads

Subscription customers can also choose to purchase the premium offerings with Advanced Support or Enterprise Priority Support to help implement solutions faster, maximize productivity, and minimize downtime.

**Advanced Support:** This level of support provides one-on-one telephone and web access to senior Autodesk support specialists. Advanced Support features unlimited, priority, one-on-one, extended hours\*\*, global phone support from senior Autodesk support specialists, remote desktop assistance, and prioritized web support options.

**Enterprise Priority Support:** Autodesk® Enterprise Priority Support is a premium support offering for Autodesk's direct, large-enterprise customers. It provides the most aggressive response targets for Autodesk product support as well as case status updates and resolution/mitigation targets. This offering also features a comprehensive program of proactive support and other services, including the assistance of a support account manager who personally oversees all account needs.

\* Subject to the applicable Subscription terms and conditions.

\*\* Extended Support Hours ("24x5") are determined based on three regional time zones (EST for the Americas, CET for Europe, the Middle East and Africa, and SGT for Asia-Pacific) and cover 24 hours per day, 5 days a week Monday through Friday, excluding Autodesk holidays in the identified time zone only. Support availability during Extended Support Hours refers to telephone support requests; web support requests can be submitted at any time.



## Administrative Tools

### Control and organize your benefits.

Contract managers can easily manage your organization's Subscription benefits in the Autodesk Subscription Center with the following reports and management tools:

- **Coverage Report**—Track and manage software licenses and seats. View helpful details such as contract numbers, contract start and end dates, group names, and product details.
- **Renewal Report**—Get renewal information regarding contracts that will expire in 90 days or less.
- **User Management Features and Tools**—Control which users have access to certain Subscription benefits.

## How to Subscribe

### Reward your workflow with Autodesk Subscription.

Your workflow deserves the latest technologies, services, and cloud benefits. Gain a significant competitive advantage and maximize the power of your design tools by obtaining Subscription in any one of the following ways:

- Buy Subscription for a current software license at the Autodesk online store.
- Buy Subscription for a current software license through a local Autodesk reseller.
- Add Subscription to the Autodesk software you already have by contacting a local Autodesk reseller.

You could already be a Subscription customer. Log in to the Autodesk Subscription Center and discover if you have access to the many benefits of Subscription. [www.autodesk.com/subscription](http://www.autodesk.com/subscription)

## Stay Current with Subscription and Autodesk 360

### Connect to the future benefits of cloud.

The benefits of Autodesk 360 are continuing to expand. Staying current with your Subscription and get instant access to new features, services, and products available in the cloud. Log in to Autodesk 360 with your Autodesk account information to see which benefits are available to you. Contact a reseller and renew your Subscription today:

- Sign in to Autodesk 360:  
[www.360.autodesk.com](http://www.360.autodesk.com)
- Contact a reseller:  
[www.autodesk.com/contactreseller](http://www.autodesk.com/contactreseller)
- Visit the online eStore:  
[www.autodesk.com/estore](http://www.autodesk.com/estore)

